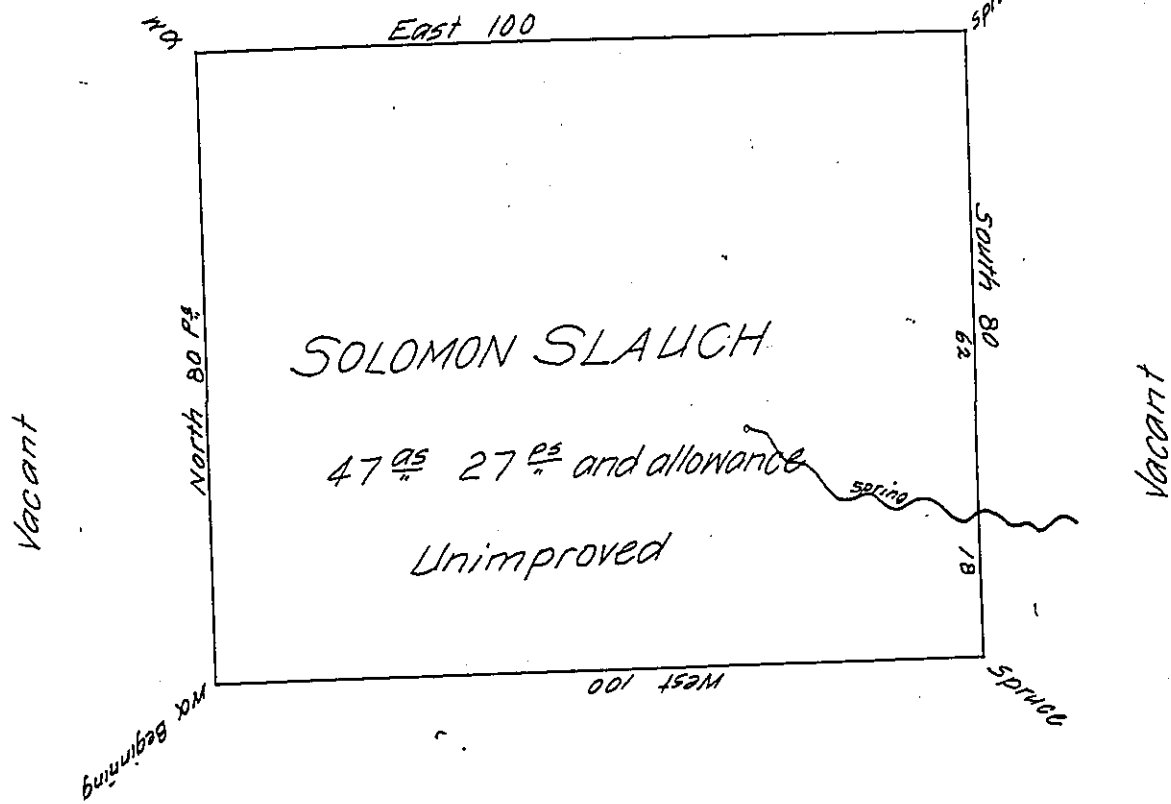


Richard Heath assistant surveyor

Scale 30 P^s to an inch

Vacant

Conrad Foose and } Sworn
John Lsenhauer } Chain carriers



Supposed to be Vacant on all sides

Situate in Union township Schuylkill county surveyed to Solomon Slauch on the 3rd day February 1825 in pursuance of a warrant granted him dated the 1st day of January 1825

Gabriel Hiester Esquire }
Surveyor General }

F. Lauderbrun Dep. Sur.

IN TESTIMONY that the above is a copy of the original remaining on file in the Department of Internal Affairs of Pennsylvania, made conformably to an Act of Assembly approved the 16th day of February 1833, I have hereunto set my hand and caused the Seal of said Department to be affixed at Harrisburg, this seventeenth day of January 1907

Isaac B. Brown
Secretary of Internal Affairs.